

What's New with ArcExplorer

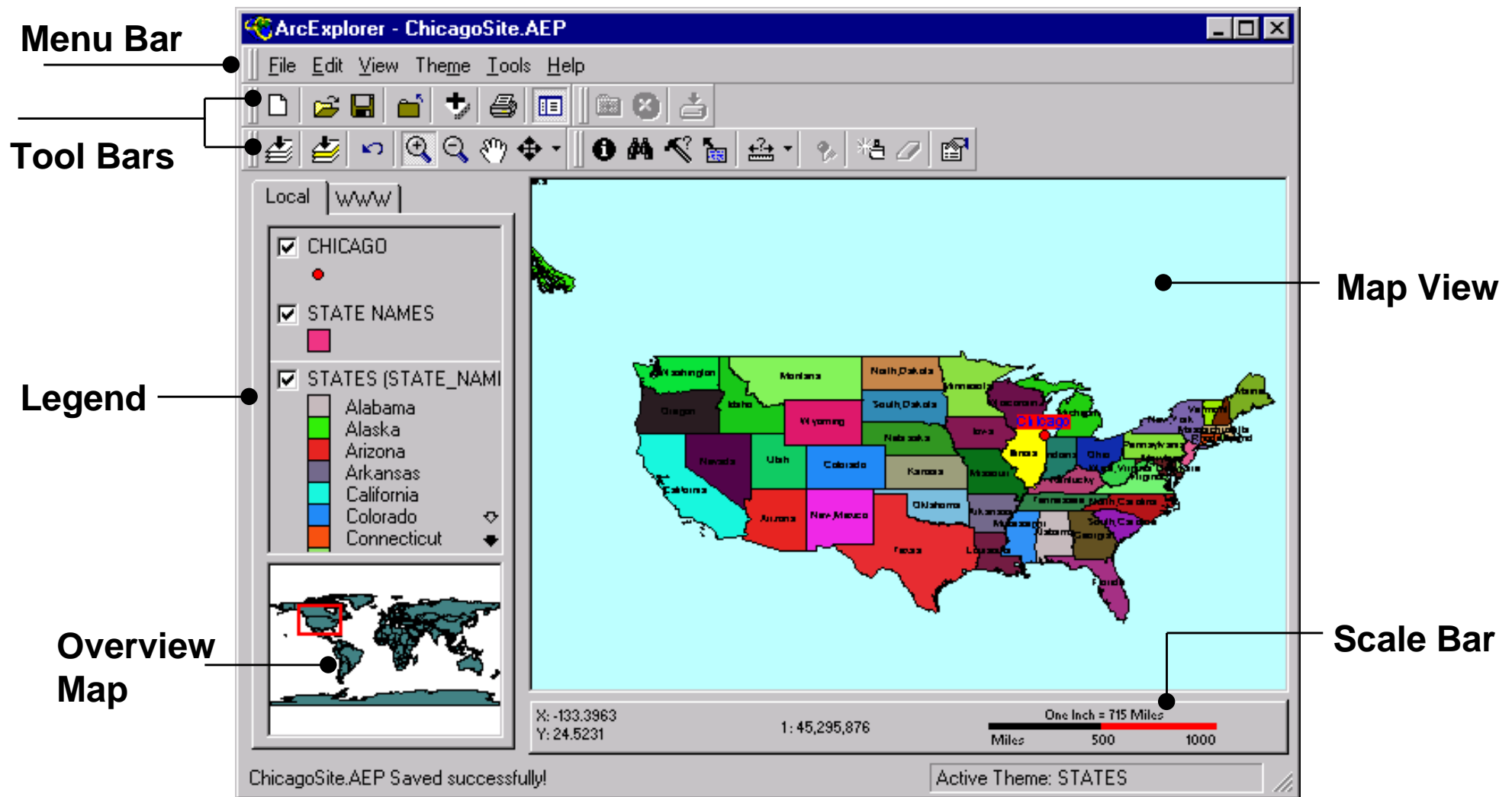
The ArcExplorer story

- **What is ArcExplorer?**
- **ArcExplorer evolution**
- **What's new ...**
- **Why is ArcExplorer free?**
- **How does ArcExplorer fit into the Internet picture?**
- **Where can I get ArcExplorer?**

What is ArcExplorer?

- **A geographic data viewer for the display and query of standard data sources**
- **Two products in one**
 - **Explore data**
 - **Retrieve data**

The ArcExplorer window



ArcExplorer evolution

- **First released Sept 1997**
 - **Overview of functionality**
 - View shapefiles, coverages, SDE layers, and images
 - Pan and zoom map
 - Find, identify and query data
 - Create maps
 - View and download data from ESRI ArcExplorer Web site

ArcExplorer 1.1

- **Released July 1998**
- **Version 1.1 encompasses**
 - **Bug fix**
 - **Enhancements**
 - **New functionality...**

What's new...

- **Address matching**
- **Enhanced labeling**
- **Measure tool**
- **Compatibility to view and download data from MO IMS 2.0 Web sites**
- **Manage ArcExplorer Web sites as bookmarks/favorites**

Why is ArcExplorer free?

- **Support the ESRI vision**
 - **A GIS on every desktop**
 - **Societal GIS**

How does ArcExplorer fit into the Internet picture?

- **Makes geographic data available on the Web**
 - View
 - Download
 - Distribute

Where can I get ArcExplorer?

- Download from <http://www.esri.com/arcexplorer>
- Approximately 7 MB



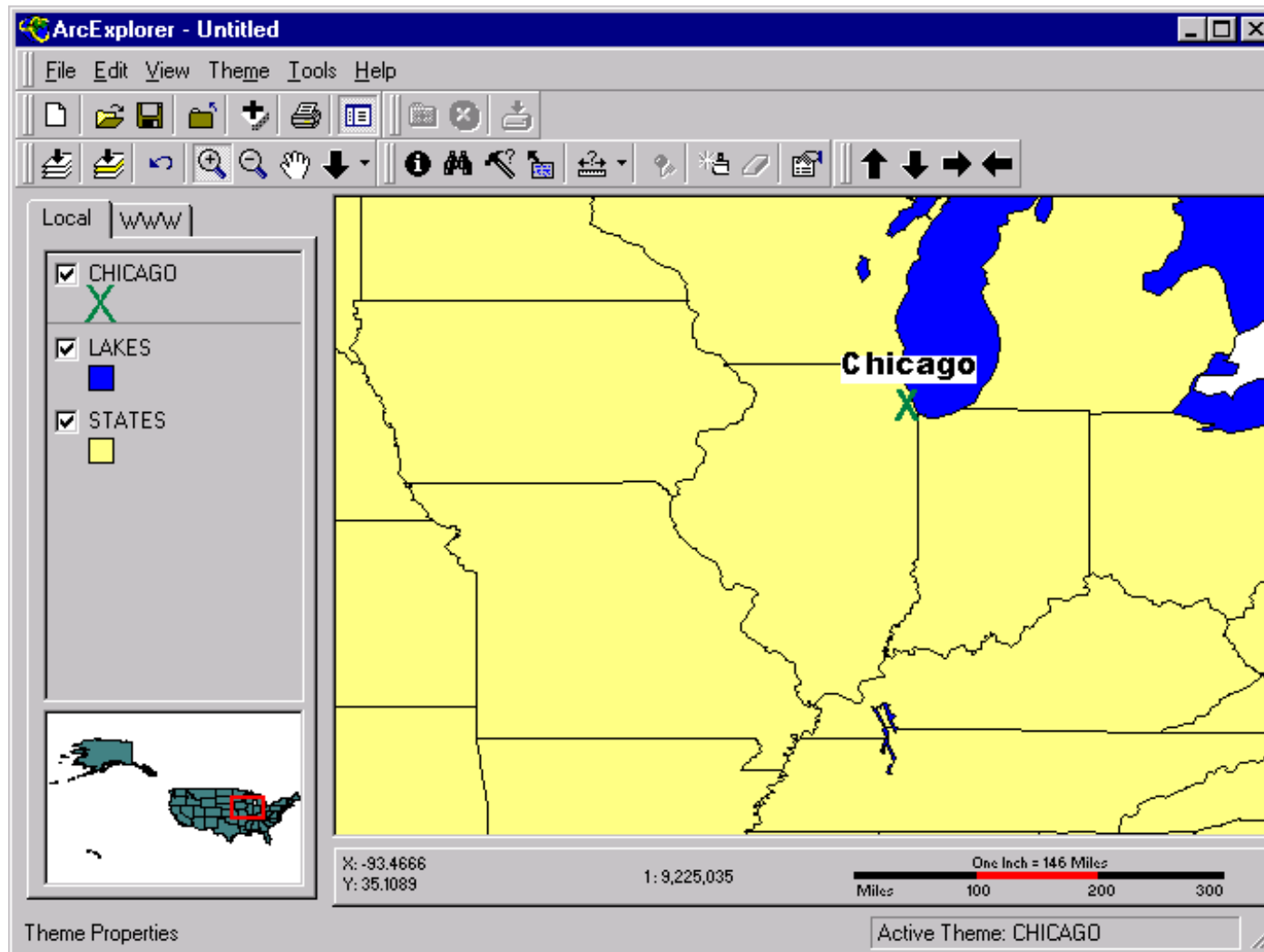
How to get help

- **ArcExplorer online help system**
- **ArcExplorer documentation**
 - Using ArcExplorer (ArcExplorer.PDF)
- **ArcExplorer homepage**
 - www.esri.com/arcexplorer
 - **ArcExplorer Discussion Forum**
 - monitored by ESRI
 - **Updated Troubleshooting and Frequently Asked Questions guides**

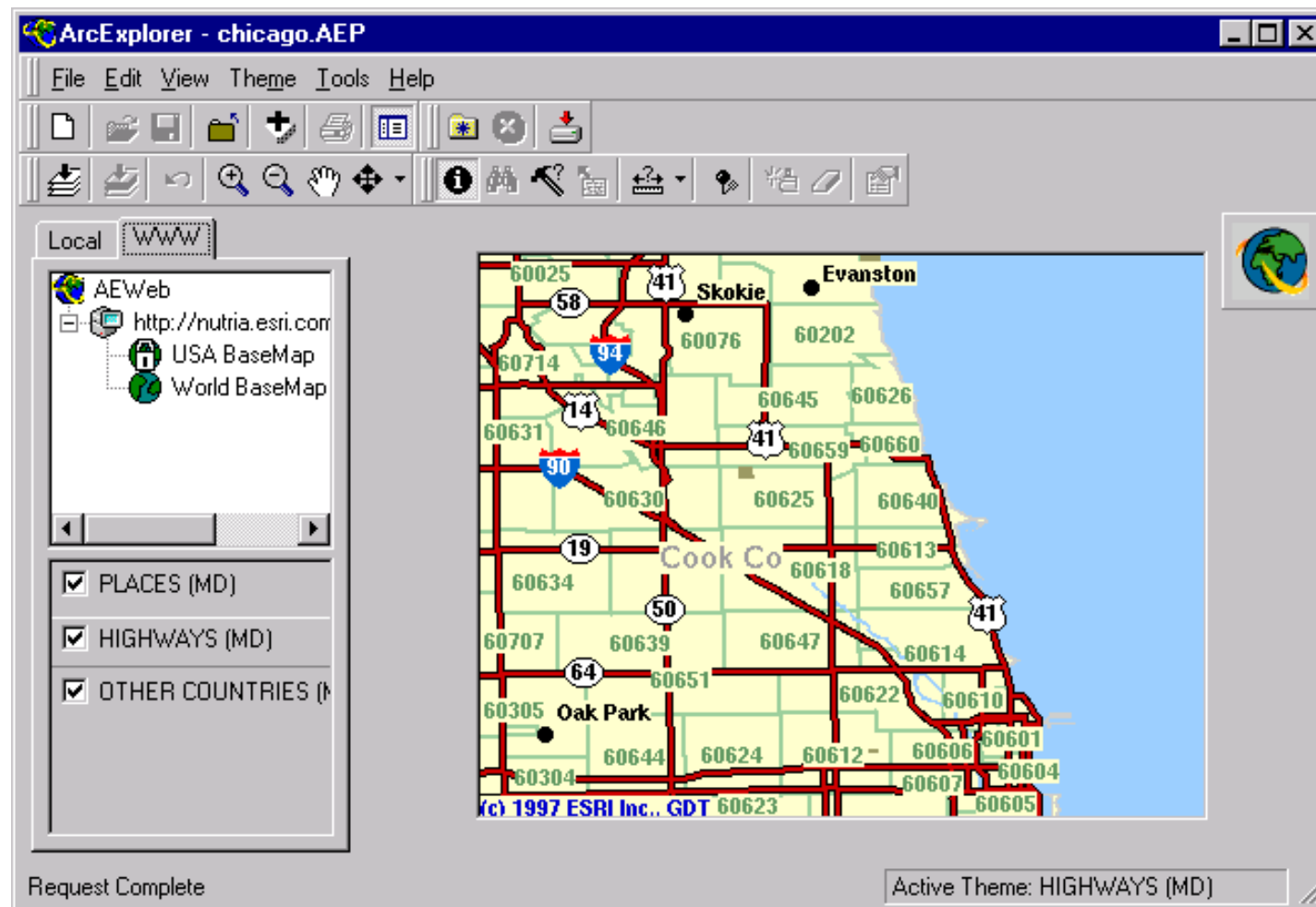
On to the demo...

- **Retrieve some data from the Web**
- **Explore data**
- **Query data**
- **Make a map**
- **Locate street addresses**
- **Serve data to the Web**

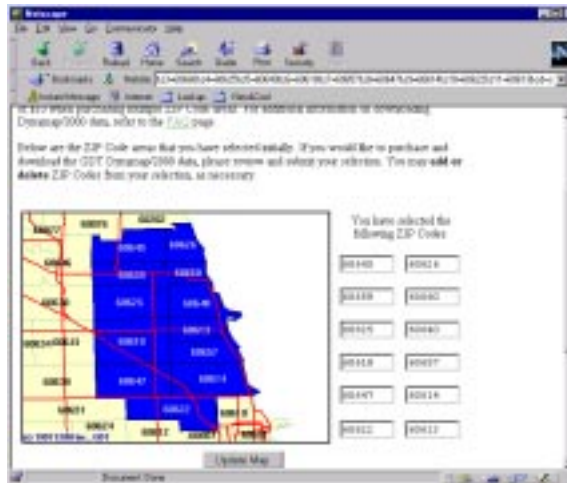
Planning a trip to Chicago



ESRI ArcExplorer Web Site



ArcData Online

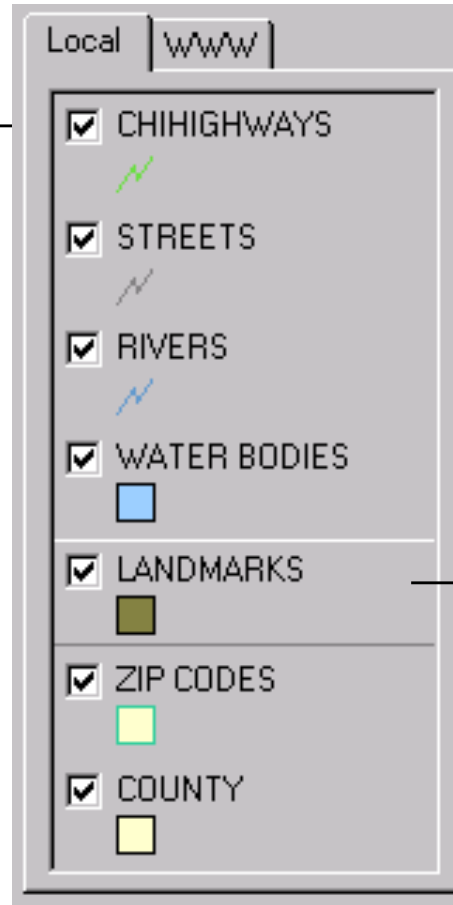


Adding data

- **ArcExplorer data file formats**
 - **Shapefiles**
 - **ARC/INFO and PC ARC/INFO coverages**
 - **Images: BMP, TIFF, ERDAS, BIL, BIP, BSQ, IMPRELL RLC, Sun Rasterfiles**
 - **ZIP file**
 - **SDE layers**

Legend: Draw the data

Turn themes
on/off



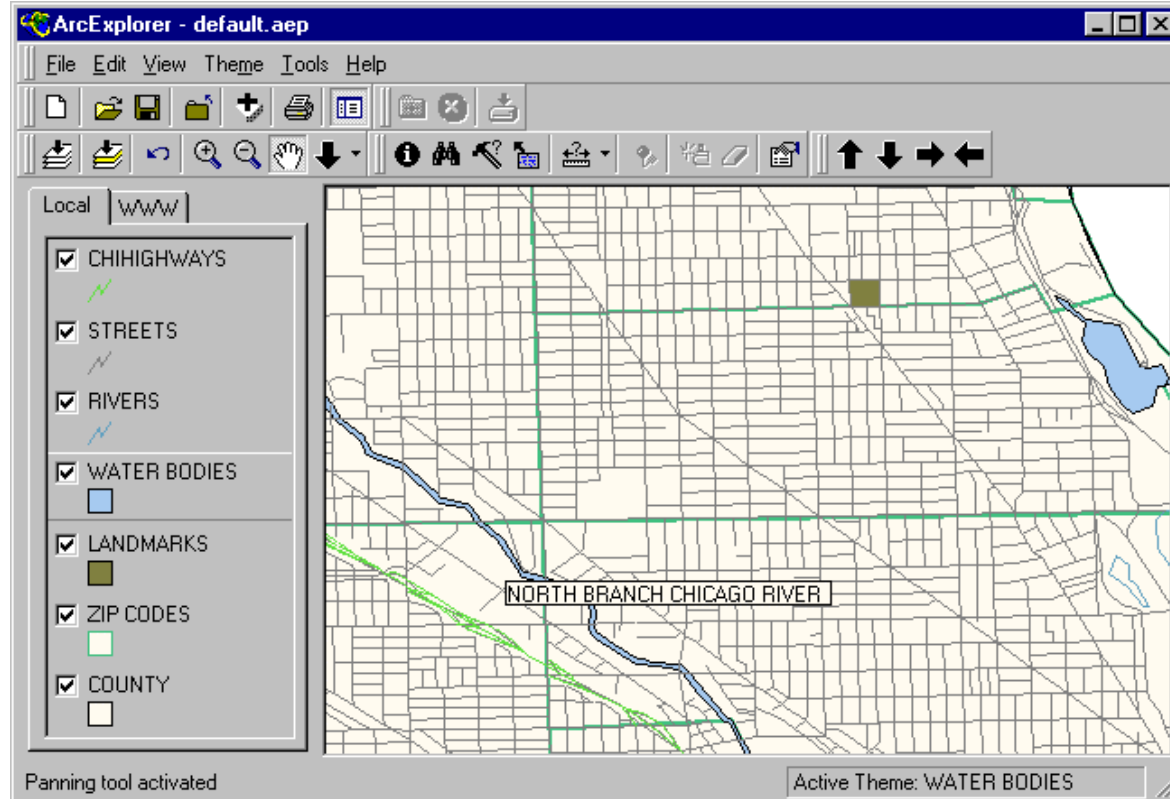
Make a theme
active

Pan and Zoom the Map

- **Zoom**
 - Zoom In or Zoom Out
 - Full extent
 - Extent of active theme
- **Pan**
 - Pan directionals
- **Use overview map to show location**

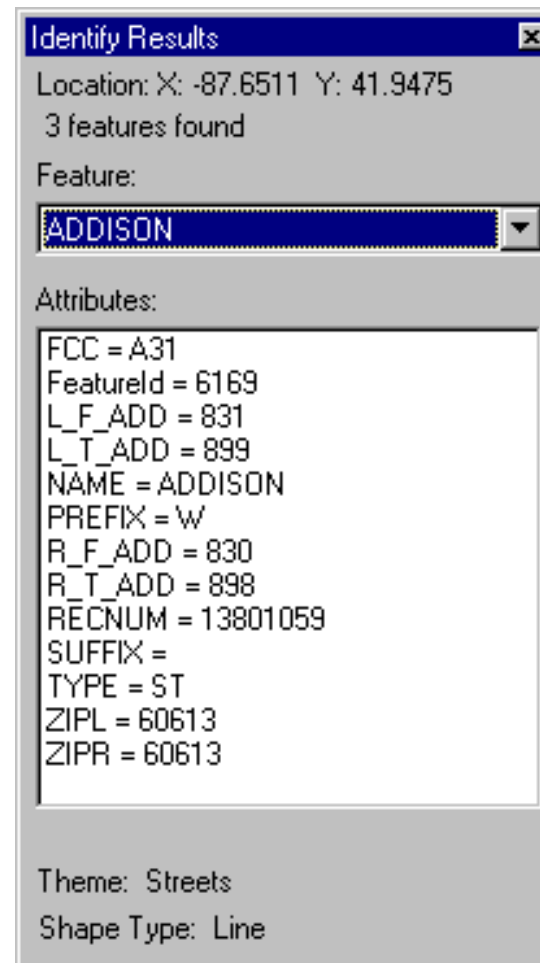
Map Tips

- Small popup box displaying a selected attribute



Identify Tool

- Display a list of a feature's attributes



Find Tool

- **Fast and simple searches**

Find Features (Text searches only)

1. Enter the text you want to find (searches are case-sensitive)
WRI

2. Select a search type
☐ Any Part of Field ☐ Whole Field ☒ Start of Field

3. Choose which themes to search
Landmarks
ZIP Codes
county

Find

4. Pick a feature 1 matches found

Theme	Feature	Value
Landmarks	NAME	WRIGLEY FIELD

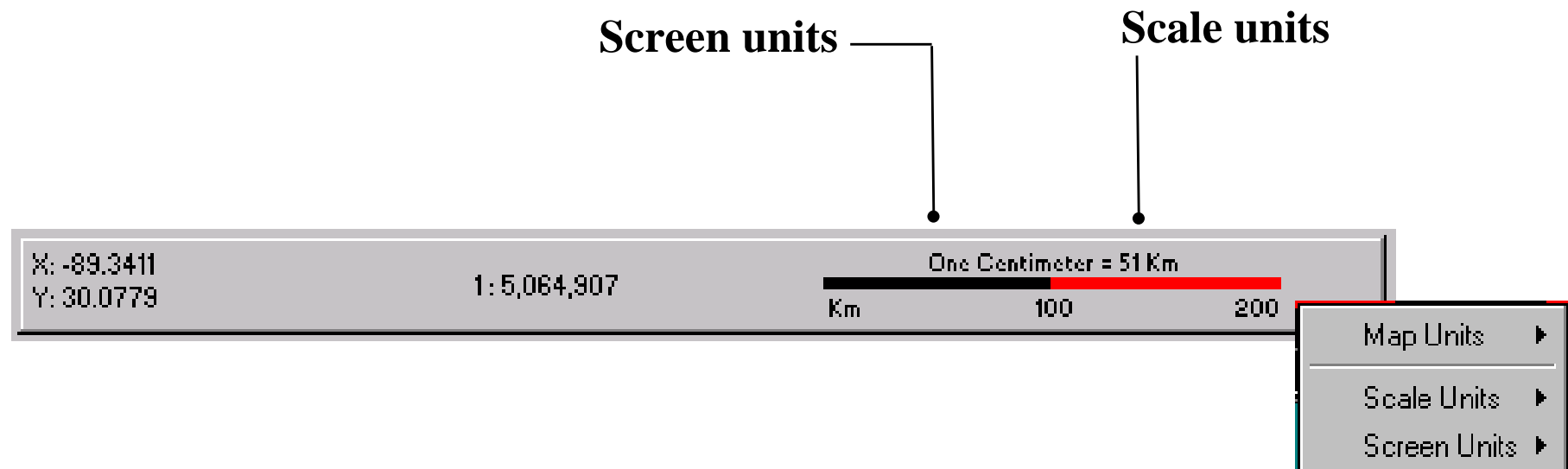
5. Select the operation to perform
Highlight Pan To Zoom To

Query Builder

- **Sample query expressions**
 - Wildcard searches
- **Using the results**
 - List attributes
 - Pan, zoom, or highlight result(s)
 - Save to a file
 - Generate statistics

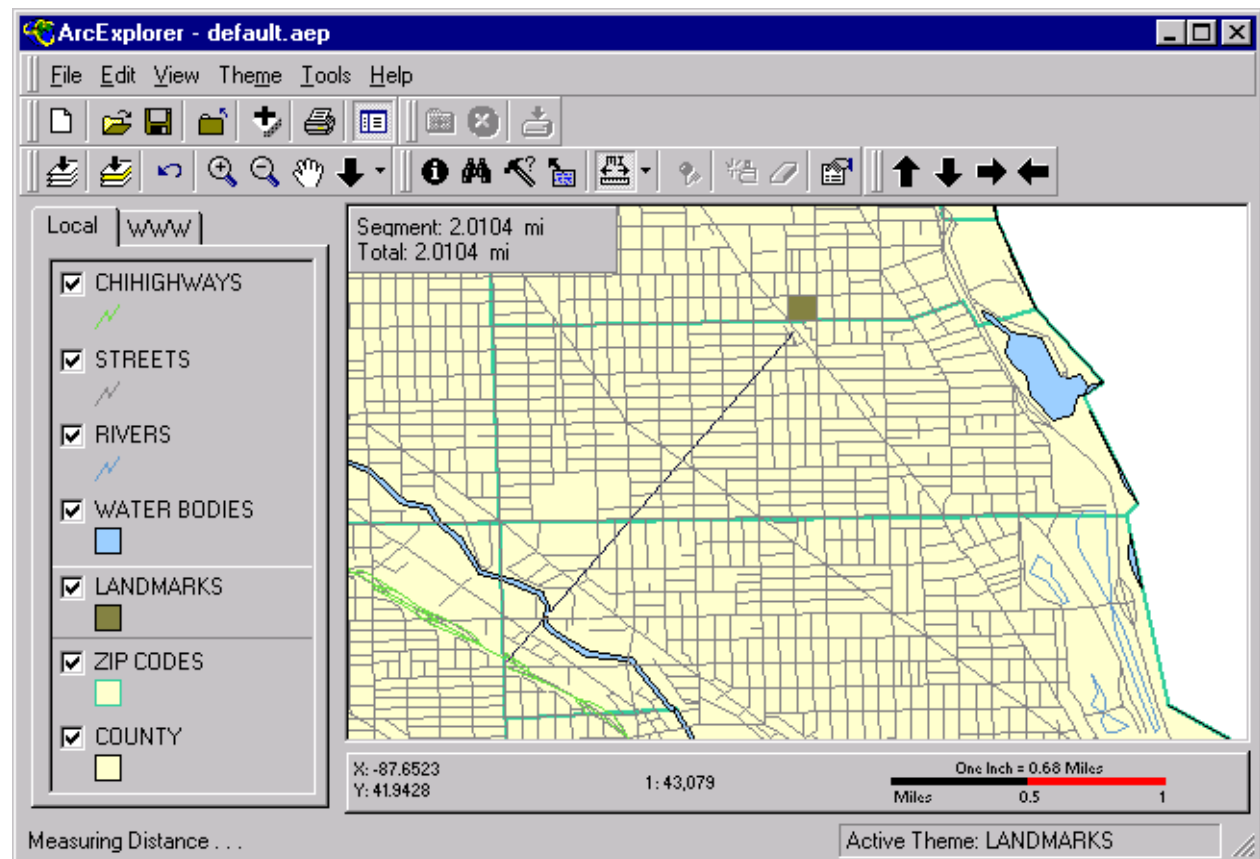
Scale Bar

- **Define map, screen, and scale units**
 - **Map units:** units in which your data is stored

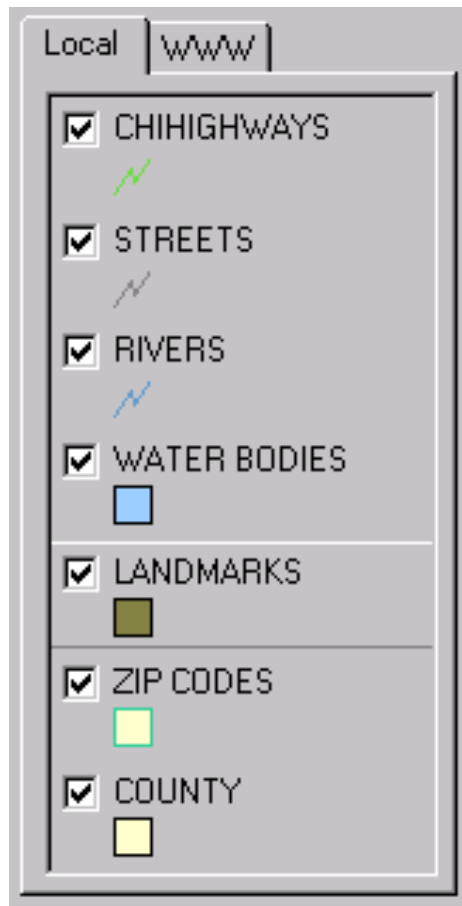


Measure tool

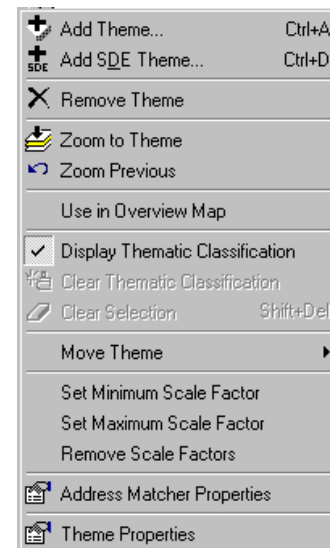
- Set in feet, miles, meters, or kilometers



Legend



**Right-click
a theme**

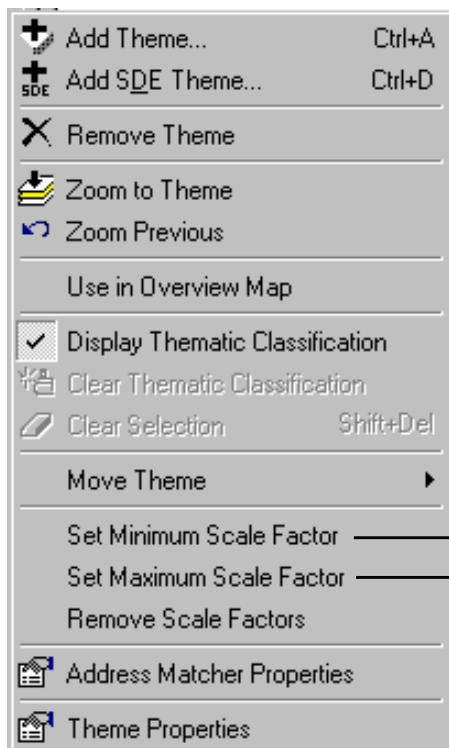


**Double-click
a theme**



Set Scale Factors

- Control the display of themes at different zoom levels



Minimum Scale Factor

Themes does not draw if you zoom in closer

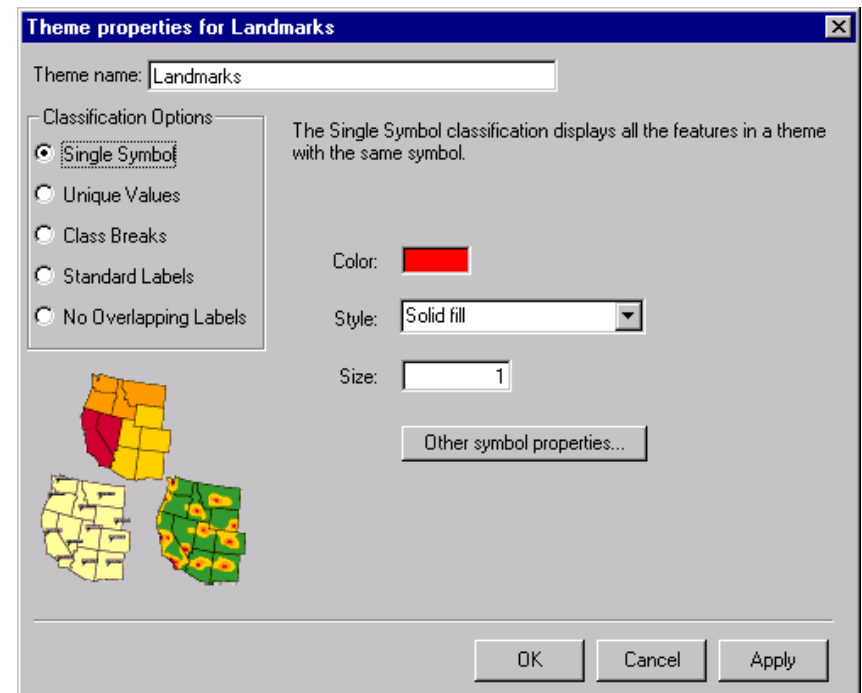
Maximum Scale Factor

Themes does not draw if you zoom further out

Making Maps with ArcExplorer

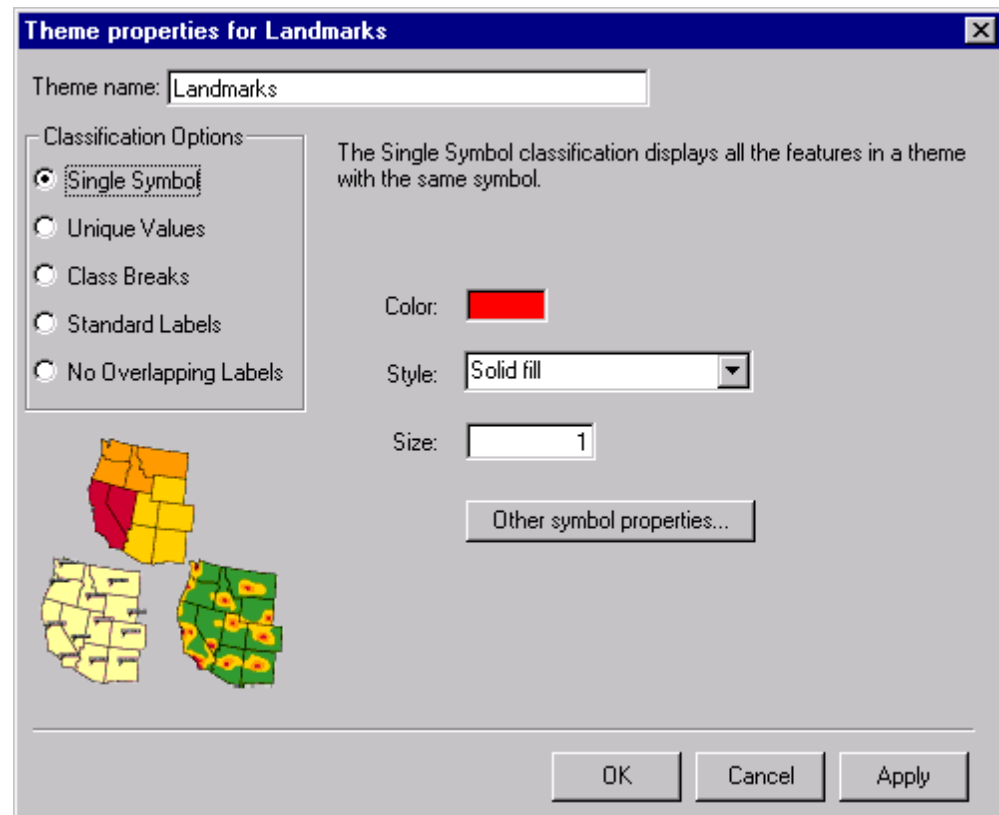
– Theme Properties Dialog

- Change a theme's name
- Change a theme's display
 - Font, color, style
 - Classification



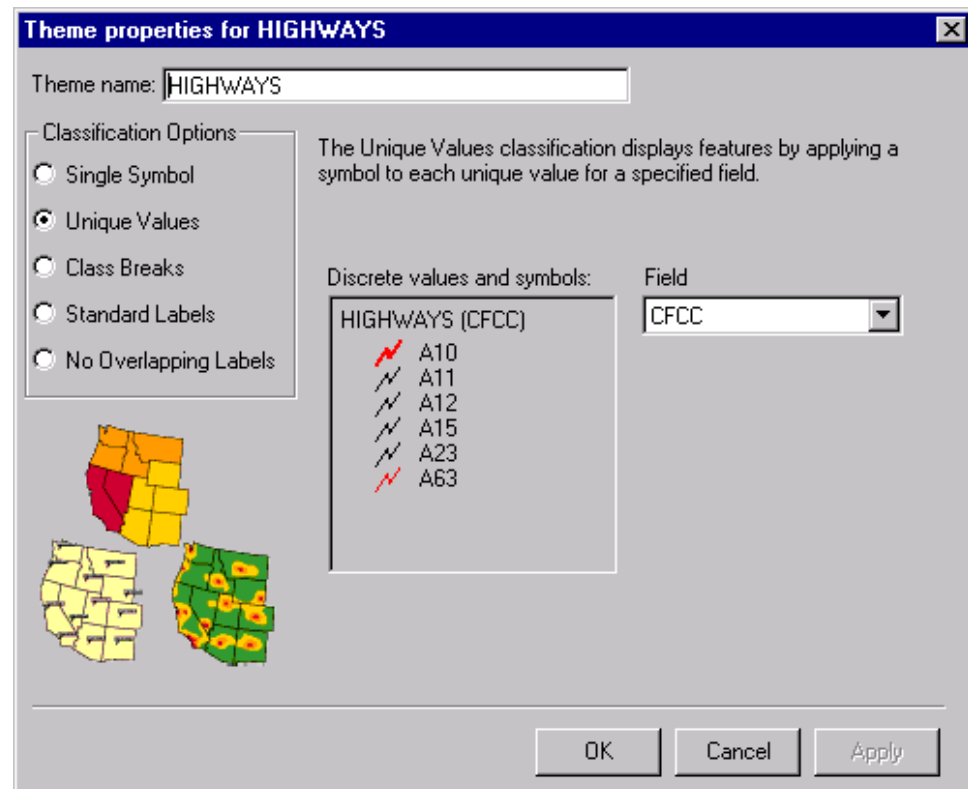
Single Symbol Maps

- Represents data as one color or symbol



Unique Values Maps

- Applies a color to each unique value in a field



Class Breaks Maps

- **Classifies values for a field**

Theme properties for TRAFFIC COUNTS

Theme name:

Classification Options

☐ Single Symbol
☐ Unique Values
☒ Class Breaks
☐ Standard Labels
☐ No Overlapping Labels

The Class Breaks classification applies symbols to a set of discrete values.

Numeric field: Number of classes:

Class breaks:

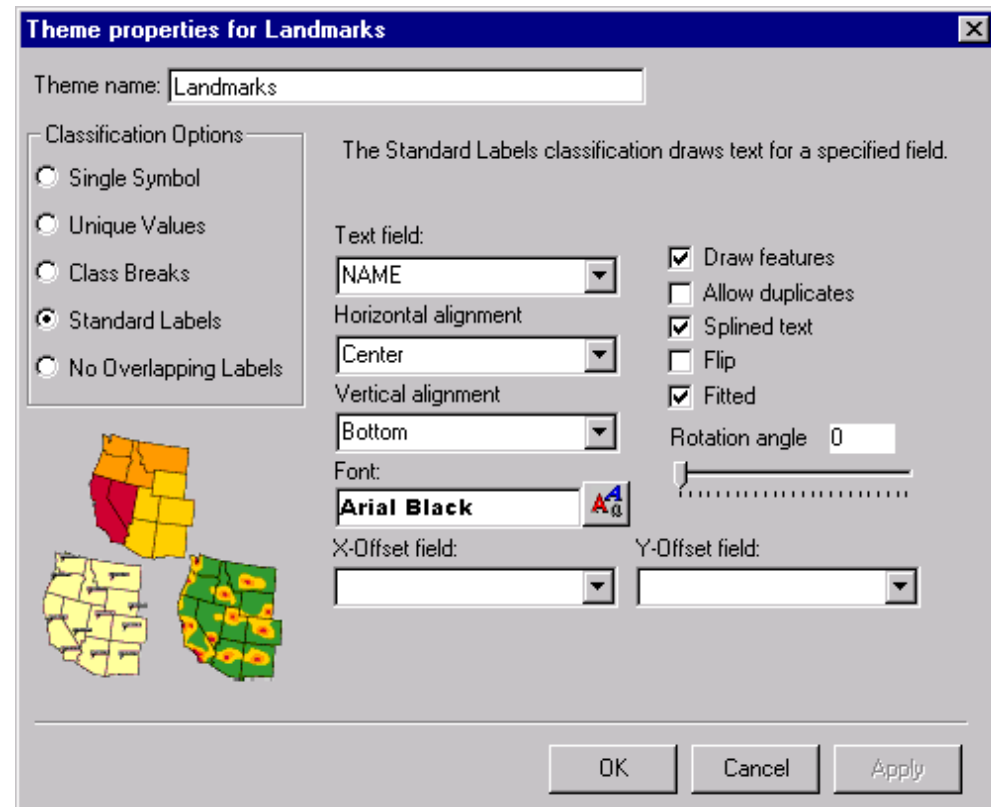
TRAFFIC COUNTS (AADTV)	
<input type="checkbox"/>	Less than 850
<input type="checkbox"/>	850 - 2,249
<input type="checkbox"/>	2,250 - 4,899
<input type="checkbox"/>	4,900 - 9,599
<input type="checkbox"/>	9,600 - 17,699
<input type="checkbox"/>	>= 17,700

Color ramp: Symbol size:

OK Cancel Apply

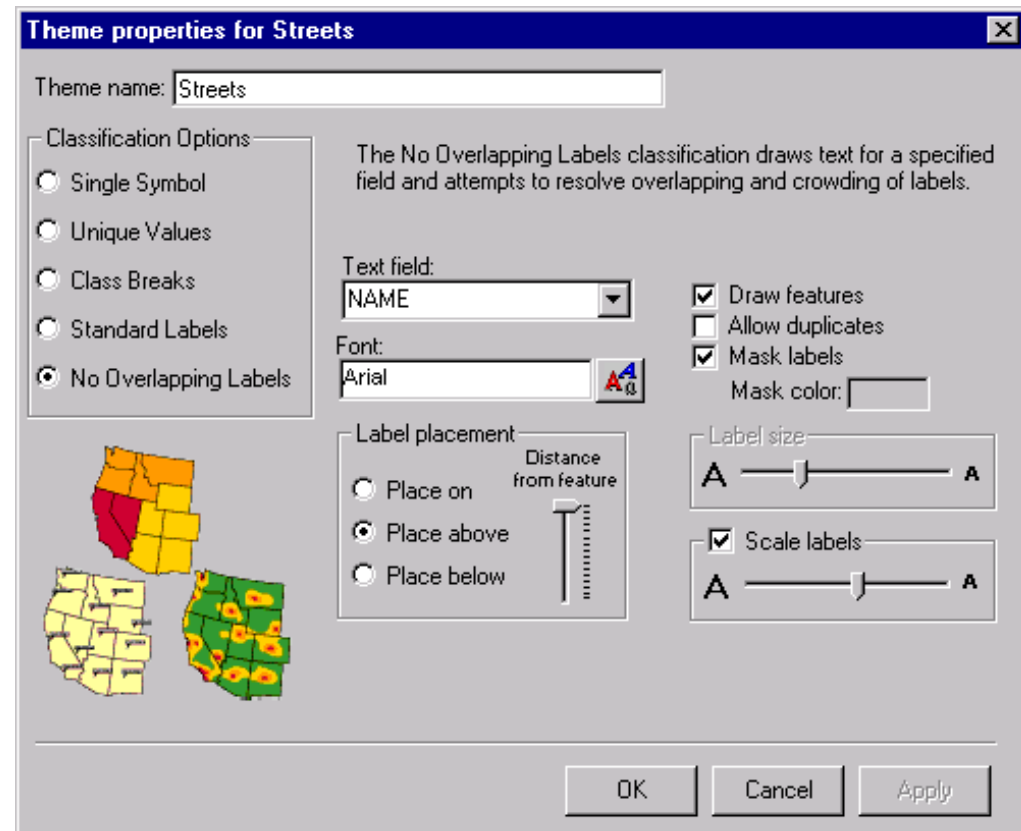
Standard Labels Maps

- **Font**
- **Alignment**
- **Placement**
 - **Spline**
 - **Flip**
 - **Fit**
 - **Rotate**



No Overlapping Labels Maps

- **Resolves crowded or overlapping labels**
 - **Font**
 - **Placement**
 - **Mask labels**
 - **Size/Scale**



Address Matching

- **Locating street addresses or intersections**
- **One address at a time**

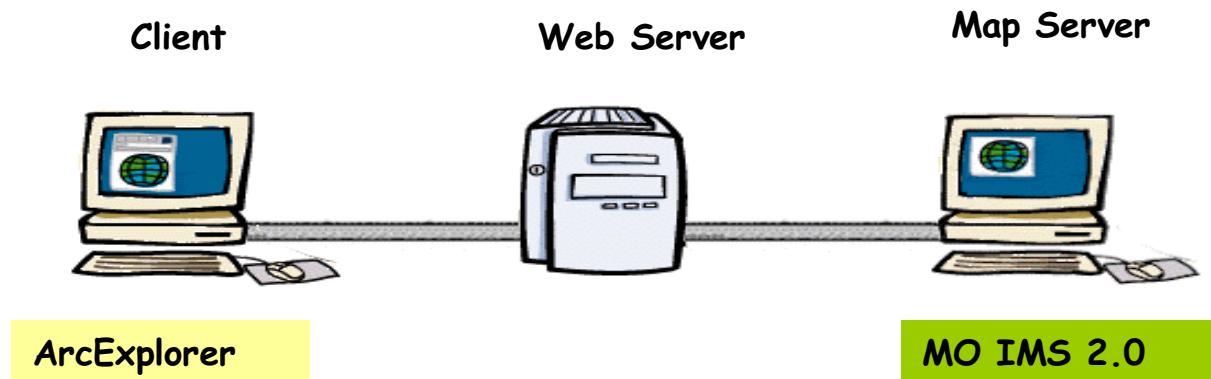
Street files for address matching

- **Shapefile or ARC/INFO coverage**
- **US addresses only**
- **City or county level file**
- **Required properties**
- **Possible Street File Sources**
 - **ArcData Online**
 - **GDT**
 - **BLR**

Sharing Your ArcExplorer Project

- **Save the project to distribute**
- **Print the map**
 - **Landscape, 8 ½ x 11 map**
- **Create image of map**
 - **BMP**
 - **EMF**
- **Serve project over the Internet**

Serve ArcExplorer Projects with MO IMS 2.0



MO IMS 2.0

- **Complete set of components for building and distributing GIS applications for the Web**

Software Distribution Rights

- **ArcExplorer software**
 - **Free distribution**
 - **Distribute with ESRI logo**